

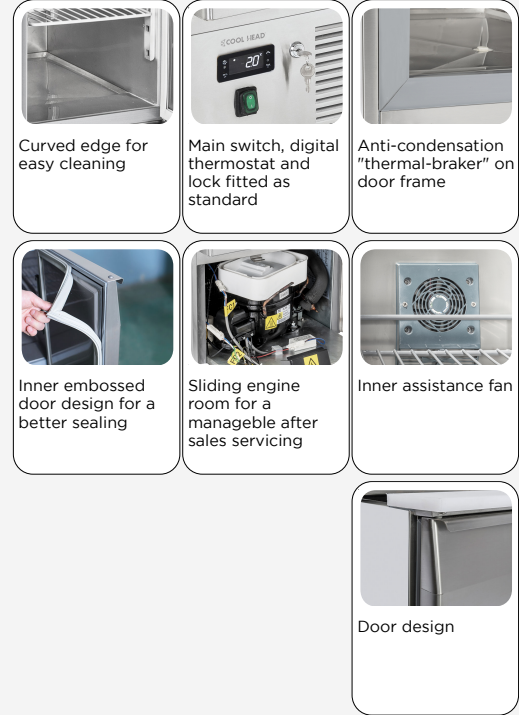
# INOX | Saladette

SALADETTE ► GN1/1 ► OPEN TOP

# CR 45A



## DETAILS



## GENERAL FEATURES

- GN1/1 Refrigerated saladette (OPEN TOP)
- Stainless Steel exterior and interior
- Static Cooling
- Automatic compressor cycle defrost
- Foaming Agent Cyclopentane (45mm per side)
- Digital Thermostat
- Sliding engine room for a manageable after sales servicing
- Plastic thermal-braker as chamber body frame
- Separated plastic water tray
- Front panel tilted holes for better air circulation
- Adjustable shelves GN1/1: 1 Pcs
- Self closing door (New inner embossed design for a better sealing)
- Removable Gasket
- Engine room lock fitted as standard
- N.4 Adjustable feet
- Holder spacer for GN pans with "hook" design (included)
- Energy efficiency class: -

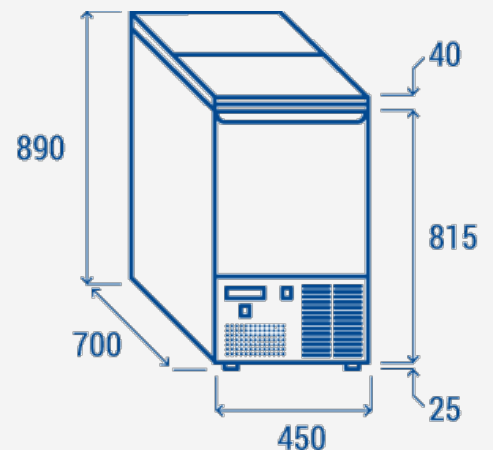
## TECHNICAL SPECIFICATIONS

Capacity	<b>103 L</b>
Temperature	<b>+0° - +8°C</b>
Consumption	<b>2.75 kWh/24h</b>
Rated Power	<b>74 W</b>
Noise level	<b>47 dB(A)</b>
Net Weight	<b>44 Kg</b>
Gross Weight	<b>55 Kg</b>
External Dimensions (WxDxH mm)	<b>450x700x880</b>
Internal Dimensions (WxDxH mm)	<b>359x571x502</b>
Packaging dimensions (WxDxH mm)	<b>500x750x1020</b>
Loading quantities 20'/40'/40"HQ	<b>66/138/138</b>

## CERTIFICATION



## PRODUCT DIMENSIONS



**RIGHTWAY ASIA**  
We make the world a cooler place