

ABS | Upright Cabinets

FREEZER UPRIGHT ► BLACK PAINTED



GENERAL FEATURES

400 Lt. Freezer upright	•
External in black coated plate, white thermoformed internally	•
Static cooling: fixed evaporator shelves (N.7 Layers, one on the bottom)	•
Manual Defrost	•
Foaming Agent Cyclopentane (70mm per side)	•
Digital Thermostat	•
Independent back-lit main switch (White color)	•
Removable Gasket and handle along door profile	•
Door: Self closing and reversible door fitted as standard	•
Doors lock fitted as standard	•
N.2 Adjustable feet + N.2 Rollers at the back	•
Energy efficiency class: -	•

TECHNICAL SPECIFICATIONS

Capacity	400 L
Temperature	-22°C ~ -15°C
Consumption	2.996 kWh/24h
Rated Power	200 W
Noise level	64 dB(A)
Net Weight	68 Kg
Gross Weight	82 Kg
External Dimensions (WxDxH mm)	600x625x1863
Internal Dimensions (WxDxH mm)	458x465x1603
Packaging dimensions (WxDxH mm)	640x705x2000
Loading quantities 20'/40'/40'HQ	27/54/54

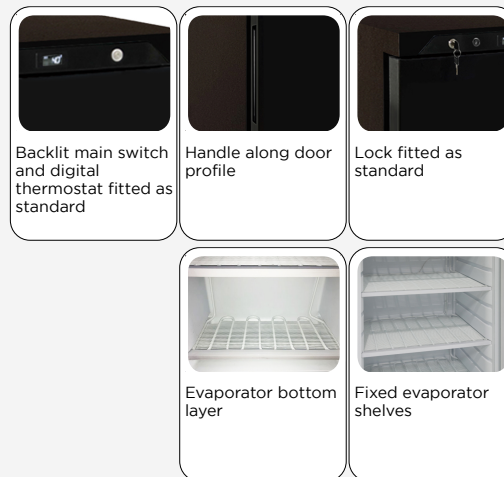
CERTIFICATION

CE RoHS

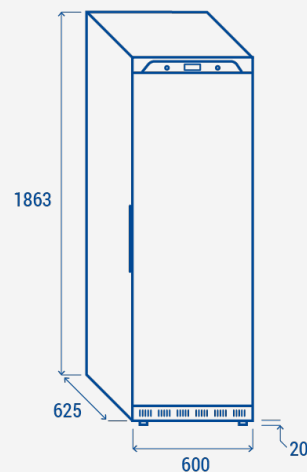
UF 4B



DETAILS



PRODUCT DIMENSIONS



RIGHTWAY ASIA
We make the world a cooler place