

ABS | Upright Cabinets

FREEZER UPRIGHT ► GLASS DOOR ► BLACK PAINTED



GENERAL FEATURES

- 200 Lt. Freezer upright (GLASS DOOR)
- External in black coated plate, white thermoformed internally
- Static cooling: fixed evaporator shelves (N.2 Layers, one on the bottom)
- Additional upper removable shelves: 1 Pcs
- Manual Defrost
- Foaming Agent Cyclopentane (70mm per side)
- Triple HEATED tempered glass with Low-e (Low emissivity glasses) and Argon gas
- Digital Thermostat
- Independent back-lit main and lights switches (White color)
- Double vertical LED light along door profile
- Removable Gasket and handle along door profile
- Doors lock fitted as standard
- N.2 Adjustable feet + N.2 Rollers at the back
- Energy efficiency class: -

TECHNICAL SPECIFICATIONS

| | |
|----------------------------------|---------------|
| Capacity | 200 L |
| Temperature | -20°C ~ -15°C |
| Consumption | 3.4 kWh/24h |
| Rated Power | 180 W |
| Noise level | 62 dB(A) |
| Net Weight | 50 Kg |
| Gross Weight | 54 Kg |
| External Dimensions (WxDxH mm) | 600x625x853 |
| Internal Dimensions (WxDxH mm) | 458x476x603 |
| Packaging dimensions (WxDxH mm) | 640x660x890 |
| Loading quantities 20'/40'/40'HQ | 54/108/162 |

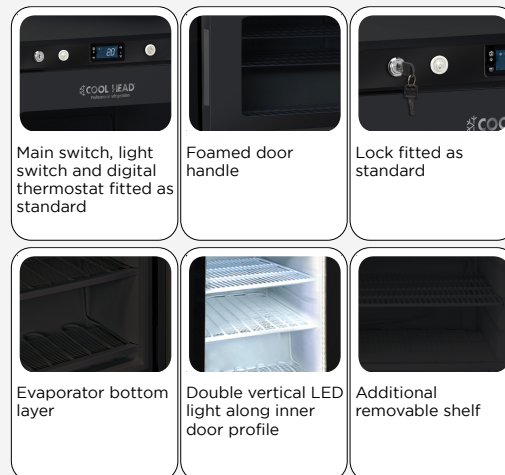
CERTIFICATION

CE RoHS

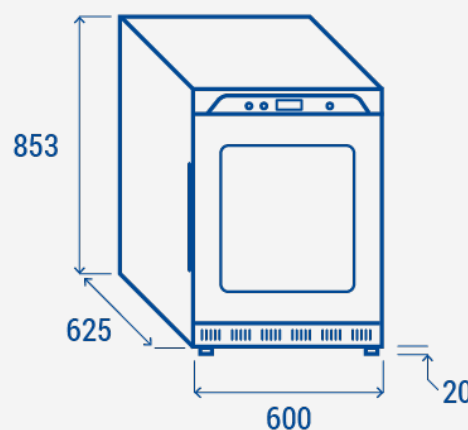
UFG 2B



DETAILS



PRODUCT DIMENSIONS



RIGHTWAY ASIA
We make the world a cooler place