

ABS | Upright Cabinets

REFRIGERATED UPRIGHT ▶ BLACK PAINTED



GENERAL FEATURES

- 400 Lt. Refrigerated upright
- External in black coated plate, white thermoformed internally
- Roll-bond evaporator system with fan assisted cooling
- Automatic compressor cycle defrost
- Foaming Agent Cyclopentane (70mm per side)
- Digital Thermostat
- Independent back-lit main switch (White color)
- Removable Gasket and handle along door profile
- Door: Self closing and reversible door fitted as standard
- Doors lock fitted as standard
- Adjustable shelves: 4 Pcs + 1 BOTTOM Shelf
- N.2 Adjustable feet + N.2 Rollers at the back
- Energy efficiency class: C

TECHNICAL SPECIFICATIONS

Capacity	400 L
Temperature	+0°C - +10°C
Consumption	1.359 kWh/24h
Rated Power	155 W
Noise level	54 dB(A)
Net Weight	68 Kg
Gross Weight	82 Kg
External Dimensions (WxDxH mm)	600x625x1863
Internal Dimensions (WxDxH mm)	458x465x1603
Packaging dimensions (WxDxH mm)	640x705x2000
Loading quantities 20'/40'/40'HQ	27/54/54

CERTIFICATION

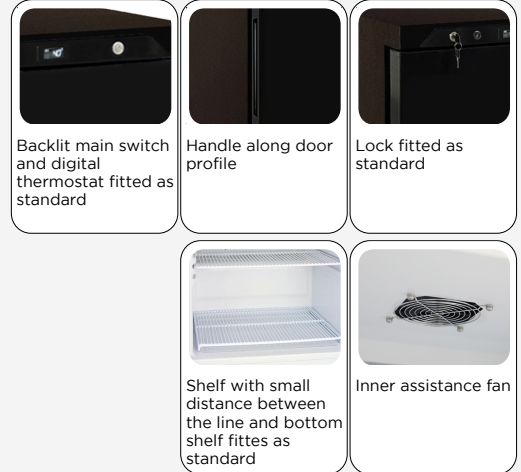
CE RoHS



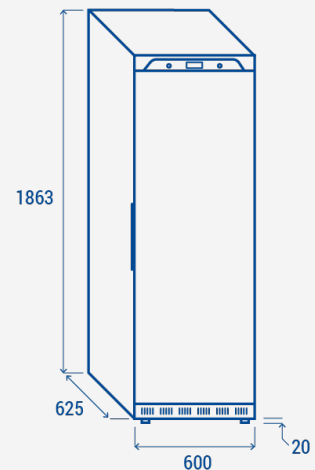
UR 4B



DETAILS



PRODUCT DIMENSIONS



RIGHTWAY ASIA
We make the world a cooler place