

INOX | VRX

REFRIGERATED SHOWCASE ▶ GN 1/4 PANS ▶ REFRIGERATED TOPPING UNITS

VRX 15/335

- 
- 
- GAS
R290
-] [
30 mm
- 4**
CLIMATIC
CLASS
- 
38°C

DETAILS



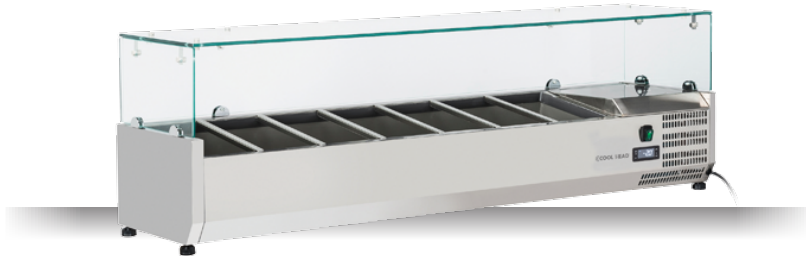
Tempered glass top



Digital Thermostat



Higher stainless steel adjustable feet as optional



GENERAL FEATURES

- Refrigerated horizontale showcase (Pans GN1/4) •
- Stainless Steel exterior and interior •
- Static Cooling •
- Automatic compressor cycle defrost •
- Single copper pipe evaporator (No welding in the foaming) •
- Digital Thermostat •
- N.4 Adjustable feet •
- Spacer set included •
- GN1/4 Pans are not included with the unit •
- Tempered glass top •
- Higher stainless steel adjustable feet as optional •
- Energy efficiency class: - •

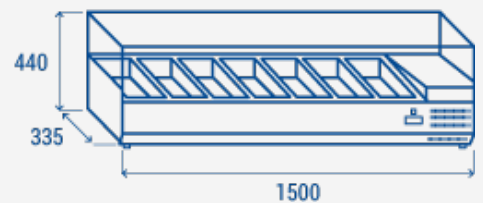
TECHNICAL SPECIFICATIONS

Capacity	36 L
Temperature	+2° ~ +8°C
Consumption	1.8 kWh/24h
Rated Power	135 W
Noise level	28 dB(A)
Net Weight	69 Kg
Gross Weight	81 Kg
External Dimensions (WxDxH mm)	1500x335x440
Internal Dimensions (WxDxH mm)	1150x247x157
Packaging dimensions (WxDxH mm)	1570x390x443
Loading quantities 20'/40'/40"HQ	85/180/180

CERTIFICATION

CE  RoHS

PRODUCT DIMENSIONS



RIGHTWAY ASIA
We make the world a cooler place