

INOX | VRX

REFRIGERATED SHOWCASE ▶ GN 1/3 PANS ▶ REFRIGERATED TOPPING UNITS

VRX 15/395



DETAILS



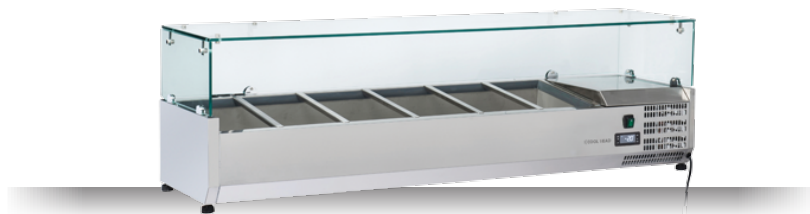
Tempered glass top



Digital Thermostat



Higher stainless steel adjustable feet as optional



GENERAL FEATURES

| | |
|---|---|
| Refrigerated horizontale showcase (Pans GN1/3) | • |
| Stainless Steel exterior and interior | • |
| Static Cooling | • |
| Automatic compressor cycle defrost | • |
| Single copper pipe evaporator (No welding in the foaming) | • |
| Digital Thermostat | • |
| N.4 Adjustable feet | • |
| Spacer set included | • |
| GN1/3 Pans are not included with the unit | • |
| Tempered glass top | • |
| Higher stainless steel adjustable feet as optional | • |
| Energy efficiency class: - | • |

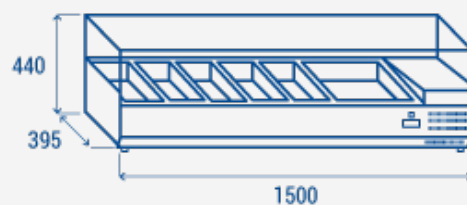
TECHNICAL SPECIFICATIONS

| | |
|----------------------------------|--------------|
| Capacity | 45 L |
| Temperature | +2° - +8°C |
| Consumption | 1.85 kWh/24h |
| Rated Power | 135 W |
| Noise level | 28 dB(A) |
| Net Weight | 72 Kg |
| Gross Weight | 84 Kg |
| External Dimensions (WxDxH mm) | 1500x395x440 |
| Internal Dimensions (WxDxH mm) | 1150x307x157 |
| Packaging dimensions (WxDxH mm) | 1570x460x443 |
| Loading quantities 20'/40'/40'HQ | 85/185/185 |

CERTIFICATION

CE RoHS

PRODUCT DIMENSIONS



RIGHTWAY ASIA

We make the world a cooler place