

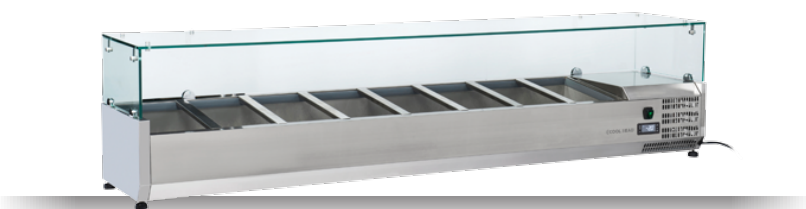
INOX | VRX

REFRIGERATED SHOWCASE ▶ GN 1/3 PANS ▶ REFRIGERATED TOPPING UNITS

VRX 19/395



DETAILS



GENERAL FEATURES

Refrigerated horizontale showcase (Pans GN1/3)	•
Stainless Steel exterior and interior	•
Static Cooling	•
Automatic compressor cycle defrost	•
Single copper pipe evaporator (No welding in the foaming)	•
Digital Thermostat	•
N.4 Adjustable feet	•
Spacer set included	•
GN1/3 Pans are not included with the unit	•
Tempered glass top	•
Higher stainless steel adjustable feet as optional	•
Energy efficiency class: -	•

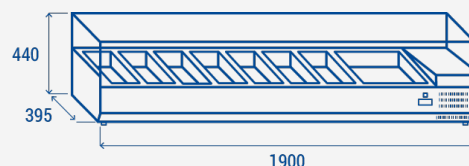
TECHNICAL SPECIFICATIONS

Capacity	57 L
Temperature	+2° ~ +8°C
Consumption	2.17 kWh/24h
Rated Power	135 W
Noise level	28 dB(A)
Net Weight	80 Kg
Gross Weight	96 Kg
External Dimensions (WxDxH mm)	1900x395x440
Internal Dimensions (WxDxH mm)	1550x307x157
Packaging dimensions (WxDxH mm)	1970x460x446
Loading quantities 20'/40'/40'HQ	70/150/150

CERTIFICATION

CE RoHS

PRODUCT DIMENSIONS


RIGHTWAY ASIA
 We make the world a cooler place