

INOX | VRX

REFRIGERATED SHOWCASE ▶ GN 1/4 PANS ▶ REFRIGERATED TOPPING UNITS

VRX 20/335



DETAILS



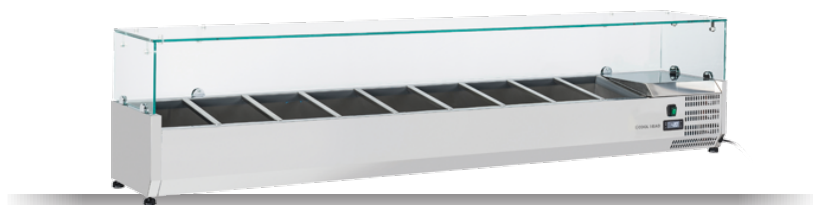
Tempered glass top



Digital Thermostat



Higher stainless steel adjustable feet as optional



GENERAL FEATURES

Refrigerated horizontale showcase (Pans GN1/4)	•
Stainless Steel exterior and interior	•
Static Cooling	•
Automatic compressor cycle defrost	•
Single copper pipe evaporator (No welding in the foaming)	•
Digital Thermostat	•
N.4 Adjustable feet	•
Spacer set included	•
GN1/4 Pans are not included with the unit	•
Tempered glass top	•
Higher stainless steel adjustable feet as optional	•
Energy efficiency class: -	•

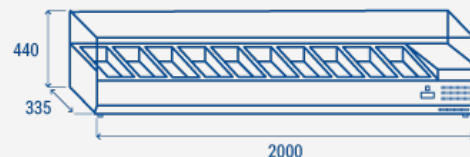
TECHNICAL SPECIFICATIONS

Capacity	48 L
Temperature	+2° ~ +8°C
Consumption	2.1 kWh/24h
Rated Power	135 W
Noise level	28 dB(A)
Net Weight	79 Kg
Gross Weight	96 Kg
External Dimensions (WxDxH mm)	2000x335x440
Internal Dimensions (WxDxH mm)	1650x247x157
Packaging dimensions (WxDxH mm)	2070x390x446
Loading quantities 20'/40'/40'HQ	70/145/145

CERTIFICATION

CE  RoHS

PRODUCT DIMENSIONS



RIGHTWAY ASIA

We make the world a cooler place