

# INOX | VRX

REFRIGERATED SHOWCASE ▶ GN 1/4 PANS ▶ REFRIGERATED TOPPING UNITS

# VRX 22/335





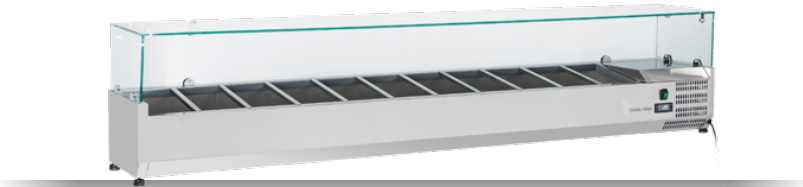



## DETAILS





Tempered glass top  
 Digital Thermostat  
 Higher stainless steel adjustable feet as optional



## GENERAL FEATURES

- Refrigerated horizontale showcase (Pans GN1/4) •
- Stainless Steel exterior and interior •
- Static Cooling •
- Automatic compressor cycle defrost •
- Single copper pipe evaporator (No welding in the foaming) •
- Digital Thermostat •
- N.4 Adjustable feet •
- Spacer set included •
- GN1/4 Pans are not included with the unit •
- Tempered glass top •
- Higher stainless steel adjustable feet as optional •
- Energy efficiency class: - •

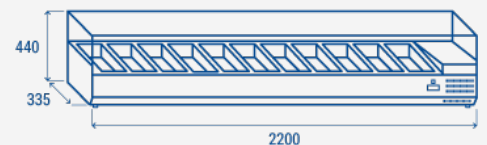
## TECHNICAL SPECIFICATIONS

Capacity	51.5 L
Temperature	+2° ~ +8°C
Consumption	2.15 kWh/24h
Rated Power	135 W
Noise level	28 dB(A)
Net Weight	83 Kg
Gross Weight	102 Kg
External Dimensions (WxDxH mm)	2200x335x440
Internal Dimensions (WxDxH mm)	1850x247x157
Packaging dimensions (WxDxH mm)	2270x390x446
Loading quantities 20'/40'/40"HQ	70/145/145

## CERTIFICATION

CE  RoHS

## PRODUCT DIMENSIONS



**RIGHTWAY ASIA**  
We make the world a cooler place