

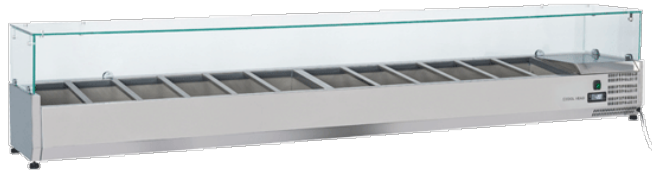
# INOX | VRX

REFRIGERATED SHOWCASE ▶ GN 1/4 PANS ▶ REFRIGERATED TOPPING UNITS

# VRX 25/335



## DETAILS



## GENERAL FEATURES

- Refrigerated horizontale showcase (Pans GN1/4)
- Stainless Steel exterior and interior
- Static Cooling
- Automatic compressor cycle defrost
- Single copper pipe evaporator (No welding in the foaming)
- Digital Thermostat
- N.4 Adjustable feet
- Spacer set included
- GN1/4 Pans are not included with the unit
- Tempered glass top
- Higher stainless steel adjustable feet as optional
- Energy efficiency class: -

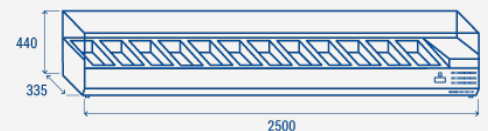
## TECHNICAL SPECIFICATIONS

Capacity	<b>60.5 L</b>
Temperature	<b>+2° - +8°C</b>
Consumption	<b>2.26 kWh/24h</b>
Rated Power	<b>135 W</b>
Noise level	<b>28 dB(A)</b>
Net Weight	<b>89 Kg</b>
Gross Weight	<b>108 Kg</b>
External Dimensions (WxDxH mm)	<b>2500x335x440</b>
Internal Dimensions (WxDxH mm)	<b>2150x247x157</b>
Packaging dimensions (WxDxH mm)	<b>2570x390x446</b>
Loading quantities 20'/40'/40"HQ	<b>50/100/100</b>

## CERTIFICATION



## PRODUCT DIMENSIONS



**RIGHTWAY ASIA**  
We make the world a cooler place