


INOX | VRX

REFRIGERATED SHOWCASE ▶ GN 1/3 PANS ▶ REFRIGERATED TOPPING UNITS


VRX 25/395

- 
- GAS
R290
-  30 mm
- 4
CLIMATIC CLASS
-  38°C


DETAILS



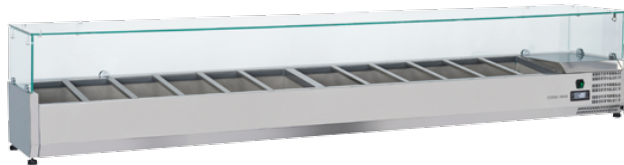
Tempered glass top



Digital Thermostat



Higher stainless steel adjustable feet as optional



GENERAL FEATURES

- Refrigerated horizontale showcase (Pans GN1/3) •
- Stainless Steel exterior and interior •
- Static Cooling •
- Automatic compressor cycle defrost •
- Single copper pipe evaporator (No welding in the foaming) •
- Digital Thermostat •
- N.4 Adjustable feet •
- Spacer set included •
- GN1/3 Pans are not included with the unit •
- Tempered glass top •
- Higher stainless steel adjustable feet as optional •
- Energy efficiency class: - •

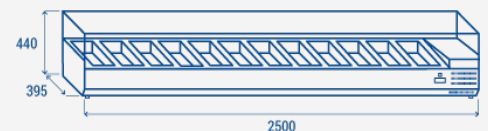
TECHNICAL SPECIFICATIONS

Capacity	78 L
Temperature	+2° - +8°C
Consumption	2.3 kWh/24h
Rated Power	135 W
Noise level	28 dB(A)
Net Weight	92 Kg
Gross Weight	111 Kg
External Dimensions (WxDxH mm)	2500x395x440
Internal Dimensions (WxDxH mm)	2150x307x157
Packaging dimensions (WxDxH mm)	2570x460x446
Loading quantities 20'/40'/40"HQ	50/100/100

CERTIFICATION

CE  RoHS

PRODUCT DIMENSIONS



RIGHTWAY ASIA
We make the world a cooler place